



Model SST650-UG

ExtremeSTP® Sustainable Sewage Treatment Plant

This energy efficient, sustainable sewage treatment plant is a good choice for areas where ground conditions allow for a buried tank but are unsuitable for a leach field or other conventional wastewater disposal methods. This system has also been used in situations where separation distances could not be met, such as separation to surface water.



Standard Features:

- Suitable for up to a 4-bedroom home or up to 8 persons
- 'Plug-and-play' design makes installation simple and service easy
- System is optimized for energy efficiency
- Heavy duty, non-corrodible, plastic tank (for this system we use a tank made for underground installation by Infiltrator Systems, Inc.)
- Tank can be buried with up to 4 feet of cover
- Tank and risers are typically insulated with 2 inches of spray foam and protected by 50 mils of polyurea exterior coating (thicker foam can be applied if needed)
- Risers are factory installed to assure watertightness and simplify field installation
- Above-ground, insulated control compartment
- Effluent pump prevents icing at the point of discharge
- UV disinfection is standard
- Residential systems come with a 2-year warranty and 2-year service contract (in the Fairbanks/North Pole area)

Treatment Technology:

Fixed activated sludge treatment is powerful yet simple to operate and maintain. Wastewater is pretreated using a settling compartment. Then aerobic bacteria oxidize the BOD₅ (biological oxygen demand) and reduce the TSS (total suspended solids), and ultraviolet light disinfects the treated water. Clean water is stored in a third compartment until it is discharged to the ground surface in doses by an effluent pump. It is best to discharge into an area of undisturbed, natural vegetation.

Lifewater Engineering Company has been designing and manufacturing sewage treatment plants for cold climates since 1999

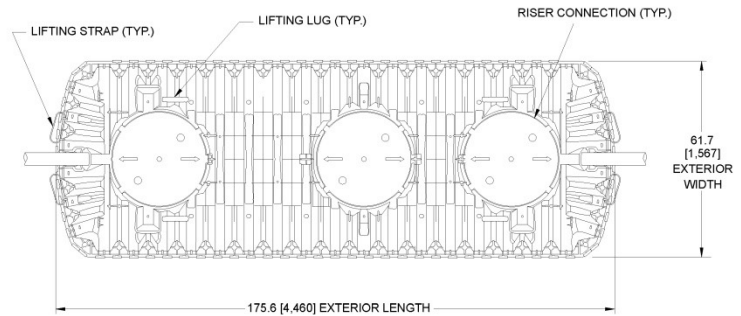
The SST650-UG combines Lifewater's wastewater treatment technology with Infiltrator Systems' IM-1530 tank

IM-1530 General Specifications and Illustrations

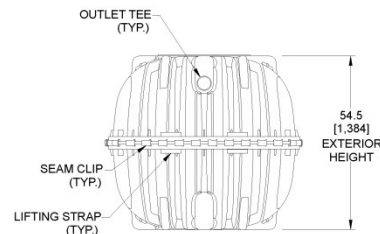
The IM-1530 is an injection molded two piece mid-seam plastic tank. The IM-1530 injection molded plastic design allows for a mid-seam joint that has precise dimensions for accepting an engineered EPDM gasket. Infiltrator's gasket design utilizes technology from the water industry to deliver proven means of maintaining a watertight seal.

The two-piece design is permanently fastened using a series of non-corrosive plastic alignment dowels and locking seam clips. The IM-1530 is assembled and sold through a network of certified Infiltrator distributors.

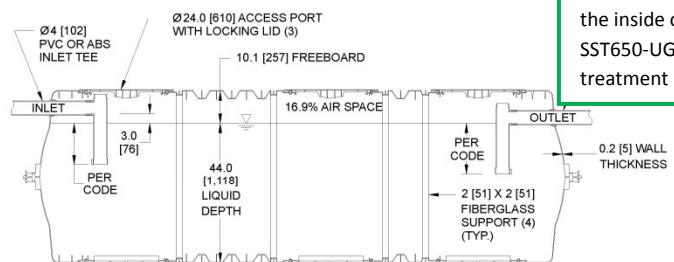
IM-1530	
Working Capacity	1537 gal (5818 L)
Total Capacity	1787 gal (6765 L)
Airspace	16.9%
Length	176" (4460 mm)
Width	62" (1567 mm)
Length-to-Width Ratio	2.8 to 1
Height	55" (1384 mm)
Liquid Level	44" (1118 mm)
Invert Drop	3" (76 mm)
Fiberglass Supports	4
Compartments	1 or 2
Maximum Burial Depth	48" (1219 mm)
Minimum Burial Depth	6" (152 mm)
Maximum Pipe Diameter	4" (100 mm)
Weight	See note below



TOP VIEW



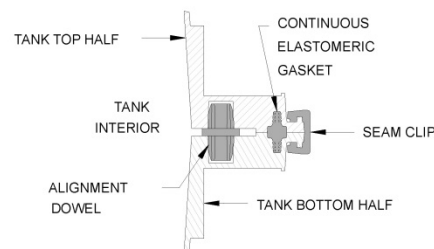
END VIEW



SIDE VIEW

The sectional side view shows the inside of a standard Infiltrator Systems tank. It is not representative of the inside of an SST650-UG sewage treatment plant.

Add 4" to each external dimension for the spray foam insulation. Shipping weight of the SST650-UG is approximately 1,500 lbs. The outlet pipe from the SST650-UG is 2" PVC.



MID-HEIGHT SEAM SECTION