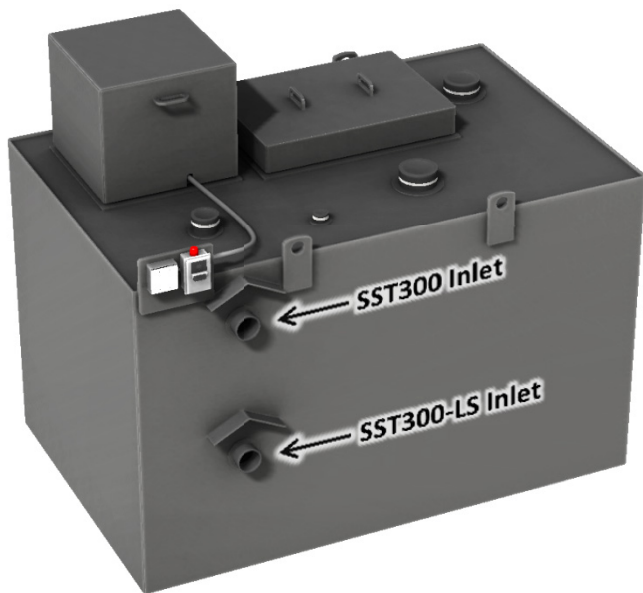




Model SST300 & SST300-LS ExtremeSTP® Sustainable Sewage Treatment Plants

These energy efficient, sustainable sewage treatment plants were developed by Lifewater Engineering Company for use in rural Alaska. These treatment plants are a good choice for your home, whether you are on municipal power or alternative energy.



Treatment Technology:

Fixed activated sludge treatment is very effective, yet very simple to operate and maintain. Wastewater is pretreated using a settling compartment. Then aerobic bacteria oxidize the BOD₅, and ultraviolet light disinfects the treated water. Clean water is stored in a third compartment until it is discharged to the ground surface by an effluent pump.

In permafrost areas, the ideal location for discharge is on the land surface in an area of natural, undisturbed vegetation. Discharge can go into a leach field if soil conditions allow.

SST300 Standard Features:

- Suitable for a 1, 2, or 3-bedroom home on hauled water, or a 1 to 2-bedroom home on a well
- 'Plug-and-play' design makes installation simple and service easy
- Heavy duty, non-corrodible, plastic tank
- System is optimized for energy efficiency
 - Uses only 100W at temperatures above 25°F
 - Power usage will increase with colder temps
- Outdoor model is fully insulated for use anywhere in Alaska or Canada
- Indoor model is totally sealed and set for easy venting to the outdoors
- Effluent pump prevents icing at the point of discharge
- UV disinfection (no chemicals)
- Residential systems come with a 2-year warranty and 2-year service contract (in the Fairbanks/North Pole area)
- Sized for air-transport to remote communities

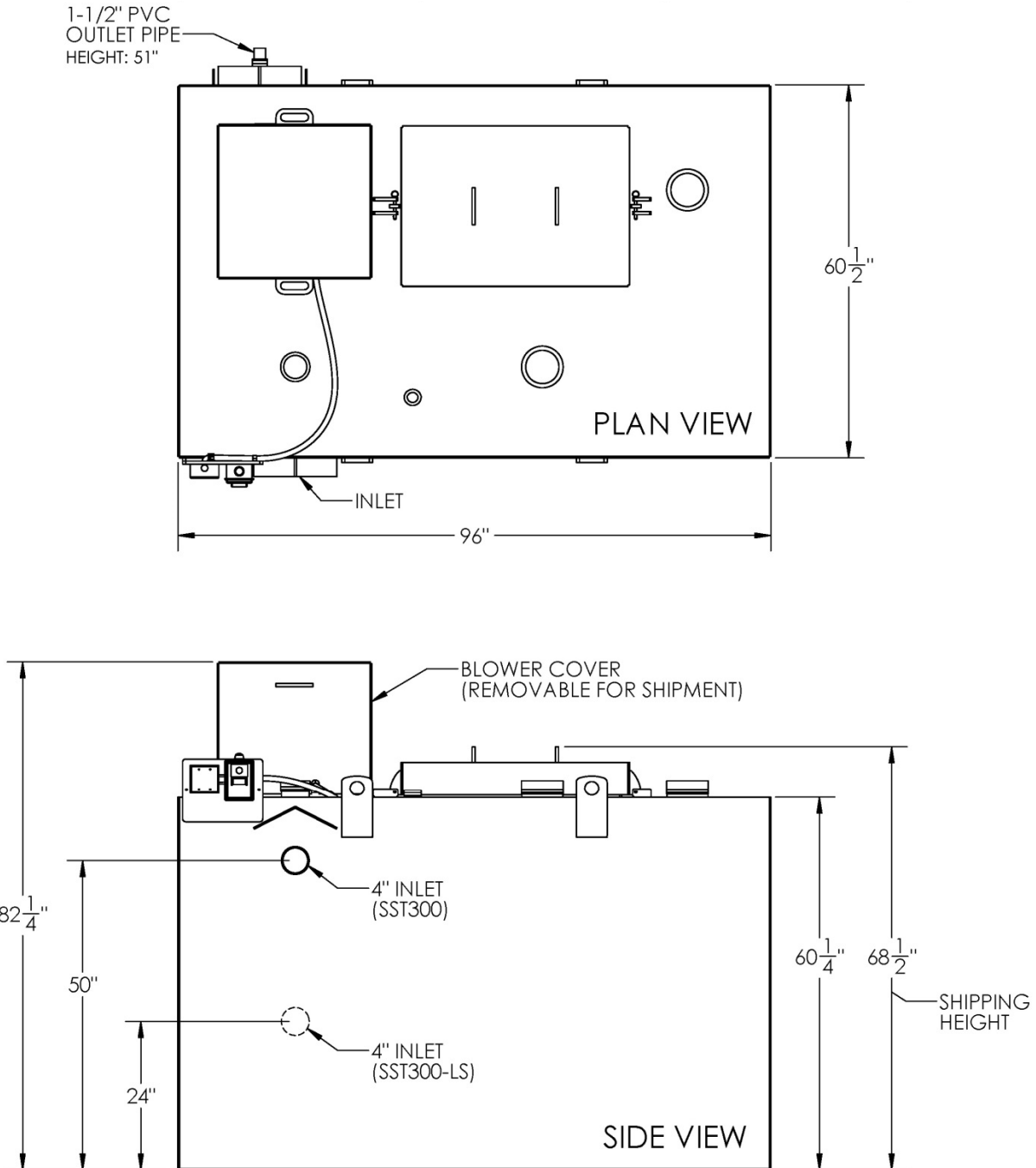
Built-in Lift Station Option:

- The SST300-LS includes a built-in lift station, lowering the inlet connection to 24" above the bottom of the unit



Lifewater Engineering Company has been designing and manufacturing sewage treatment plants for cold climates since 1999

Outdoor SST300 & SST300-LS Dimensions



Shipping weight: ~1,100 lbs

Shipping dimensions: 96"L x 67"W x 68.5"H, plus a separate pallet for blower base and cover

For the indoor model, deduct 8.5 inches from length and width and deduct 4.25 inches from height of inlet and outlet pipes. An 8' ceiling is required for indoor installations.